

Targets and benchmarking

If you don't know what your results are, how can you improve them?



How big an issue is poor fertility?

- Poor fertility costs money
 - Average loss per farm is 3 p/L
- Failure to get pregnant is a major cost
 - Involuntary culling
- If you don't know what you are achieving you can't improve
- You need:
 - Dates for culling, AI and calving
 - Pregnancy test results
 - Relying on calving alone is not sufficient



Non-return rate



- Proportion of cows not seen in heat after insemination
- Set the period – 49 days commonly
- Cheap and quick
- Needs good heat detection – 30% not pregnant
- Target: 75%
- Useful but not for benchmarking

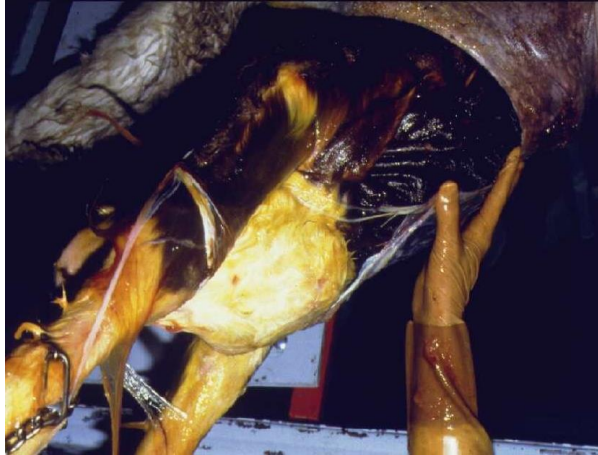
“PREVENTION IS BETTER THAN CURE”

Plan for health with your vet - get a veterinary health plan

NADIS

Animal Health Skills

Calving-to-conception interval



- Herd average time for calving to successful insemination
 - When cows are inseminated after calving
 - Success rate of insemination
- Accurate – when based on pregnancy diagnosis
- Simple easy to understand figure
- Requires good records
- Delaying first service increases CCI
- Target: 85 days gives one calf per year
- <100 days should be achievable on most farms - benchmarking

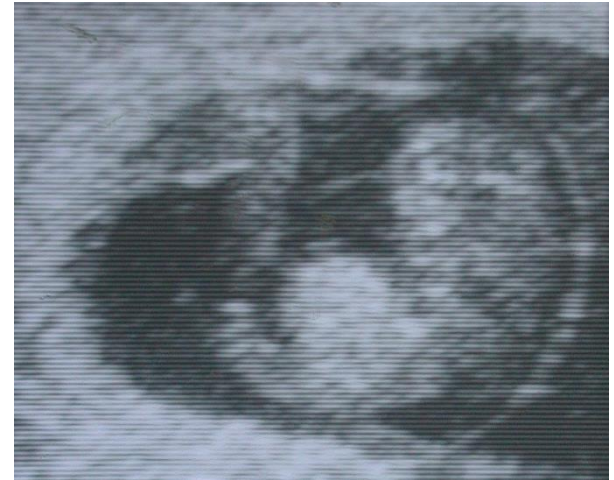
Calving to first insemination

- Key component of CCI
- Prospective – early problem identification
- Management related:
 - VWP is a choice
- Target: 65 days (75 for some systems)
- Do you get cows pregnant when you want to?

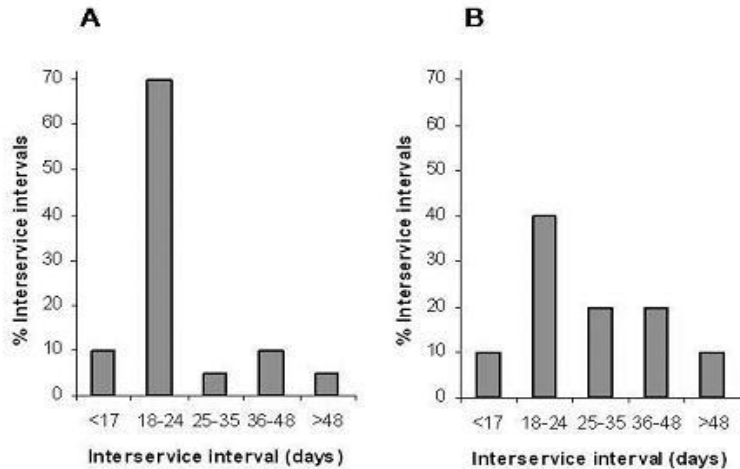


Pregnancy (conception) rate

- Pregnancies/insemination
- Accurate
- Need to record all services
- Good rates but few cows
- Target: >40%



Assessing heat detection



- Area where staff have most impact
- Calving to first oestrus – 80% <50 days
- Submission rate – proportion of cows bred - >70% for 24 day period
- Oestrus detection efficiency



The In-calf rate – a composite measure



- Single overall figure
- % in-calf 100 days after calving
- Accounts for cows that are culled
- Includes heat detection quality
- Drill down further if problems identified
- Target: 50% average - >65% achievable

Summary

- Good analysis requires good records and pregnancy testing
- Work with your vet to identify which measures are best on your farm
- Benchmark current performance against
 - Your previous performance
 - Your peers
- Develop strategies for improvement
- Check your improvement after you have implemented the strategies

Thank you for participating in
this webinar