

Nematodirosis in Lambs



- What is nematodirosis?
- How is infection transmitted?
- Why is it important?
- What to look out for?
- How to reduce the risk?
- What are the best treatments?

Webinar written and presented by
Prof Mike Taylor BVMS PhD DipEVPC DipECRSHM
CBiol MRSB MRCVS

“PREVENTION IS BETTER THAN CURE”

Plan for health with your vet - get a veterinary health plan

NADIS

Animal Health Skills

What is Nematodirosis?

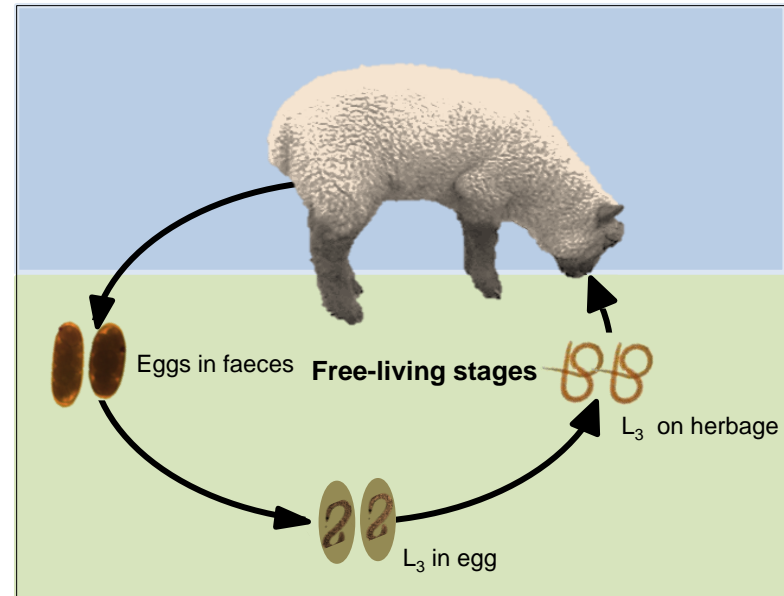
- Disease caused by the nematode parasite, *Nematodirus battus*.
- Unlike other gut parasites, larval parasite stages are the main cause of damage to the intestine.



How is infection transmitted?

Differs from other important sheep nematodes in that infective larvae develop within the eggs in the soil.

Synchronised mass hatch can lead to sudden release of large numbers of infective larvae on herbage.



Endospec 2.5% SC

Effective against nematodirus,
tapeworms, adult fluke and GI worms

Why is it important?

- The parasite is a major cause of PGE in lambs in late spring and occasionally autumn.
- Affected lambs show signs of scour and dehydration whilst ewes are unaffected.



What to look out for?

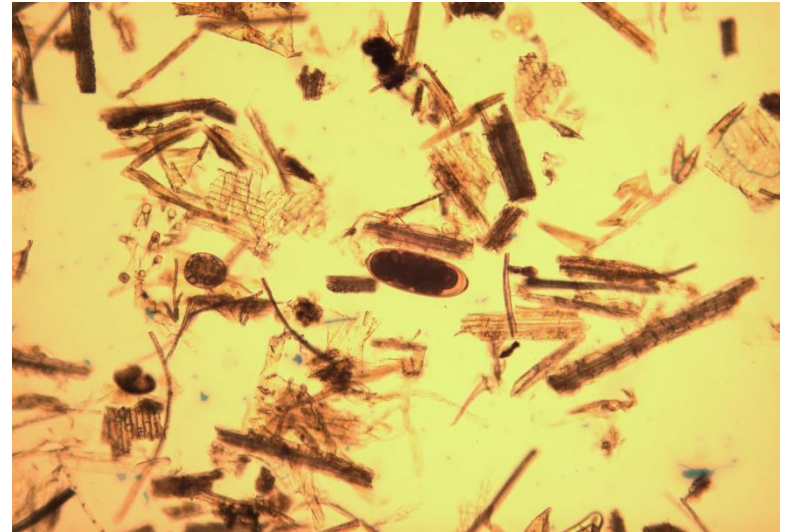
- Sudden death and outbreaks of diarrhoea in lambs aged 6-12 weeks old grazing contaminated pastures



What to look out for?

Sudden death and outbreaks of diarrhoea in lambs aged 6-12 weeks old grazing contaminated pastures.

- Faecal samples are unreliable but may show the presence of the characteristic eggs



Endospec 2.5% SC

Effective against nematodirus, tapeworms, adult fluke and GI worms

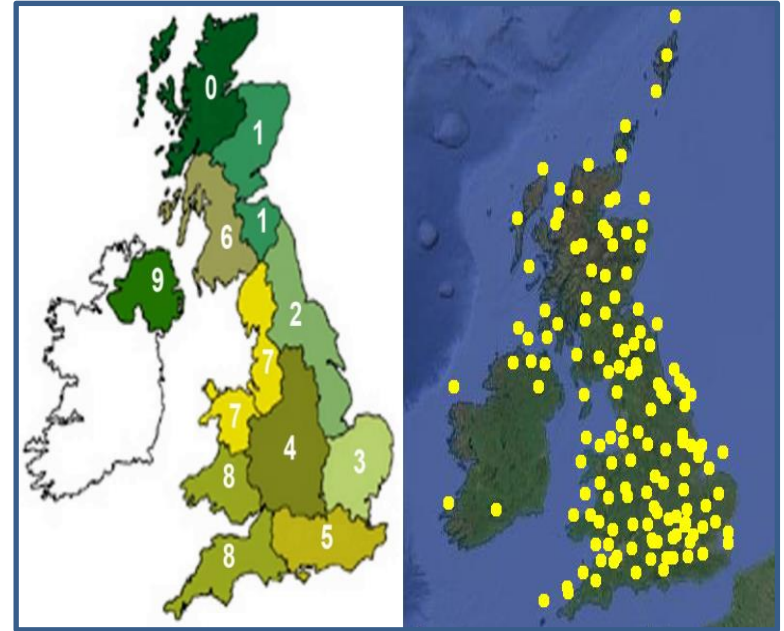
How to reduce the risk?

- Avoid fields grazed the previous year by ewes and lambs by providing 'safe' pastures



How to reduce the risk?

- Avoid fields grazed the previous year by ewes and lambs by providing 'safe' pastures.
- Follow disease forecast on the NADIS and SCOPS websites



What are the best treatments?

- Use white drench (1-BZ) products wherever possible
- More than one treatment may be required depending on age range of lambs and prevailing weather conditions



Endospec 2.5% SC

Effective against nematodirus,
tapeworms, adult fluke and GI worms

Acknowledgements

- This Nematodirosis webinar is sponsored by Bimeda
- Several of the clinical images were provided by Dr Phil Scott